

Office Space Available in Independence

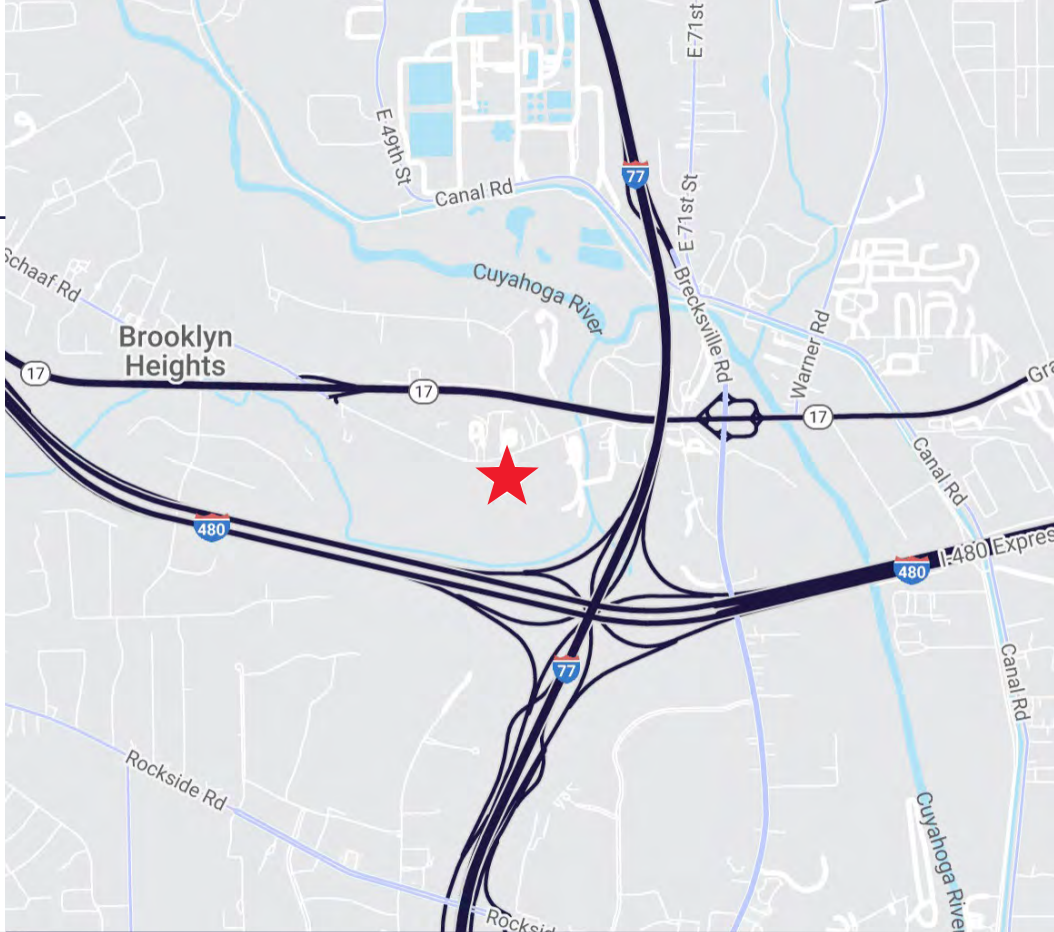
For Lease | 5720 E Schaaf Road, Independence, Ohio 44131



5720 E Schaaf Rd

- Located in the heart of Cuyahoga County with excellent access to I-77 and I-480
- Minutes from the Rockside Corridor and Valley View which host multiple dining, lodging, and service amenities
- The space features multiple private offices, conference rooms, a kitchenette, and skylights to allow for ample natural light
- All utilities included in the rental rate

Lease Rate: \$10.00/SF Gross



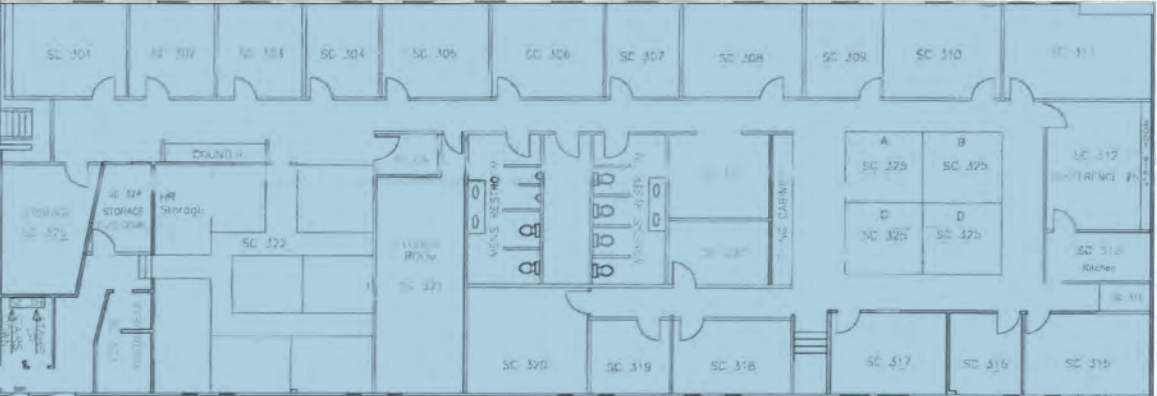
Quick Stats

Available Space	8,000 SF
Building Size	25,000 SF
Year Renovated	2025
Distance to I-480	2.1 Miles
Distance to I-77	2.4 Miles

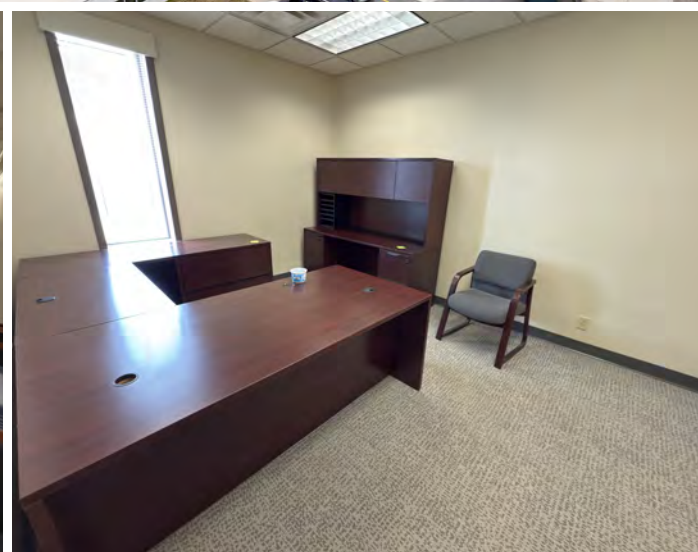
Floor Plan



Leased



Available - 8,000 SF





219,928
 Population
 (2024 | 5 Mile)

40.5
 Median Age
 (2024 | 5 Mile)

94,953
 Households
 (2024 | 5 Mile)

\$83,161
 Household Income
 (2024 | 5 Mile)

8,366
 Total Businesses
 (2024 | 5 Mile)

111,736
 Total Employees
 (2024 | 5 Mile)



**5720 E SCHAAF RD
INDEPENDENCE, OHIO 44131**

COLE SORENSON
Senior Associate
csorenson@crescorealestate.com
+1 216 525 1470

CONOR COAKLEY
Senior Vice President
ccoakley@crescorealestate.com
+1 216 232 4102



Cushman & Wakefield | CRESCO
6100 Rockside Woods Blvd, Suite 200
Cleveland, Ohio 44131

crescorealestate.com

©2026 Cushman & Wakefield. All rights reserved. The information contained in this communication is strictly confidential. This information has been obtained from sources believed to be reliable but has not been verified. NO WARRANTY OR REPRESENTATION, EXPRESS OR IMPLIED, IS MADE AS TO THE CONDITION OF THE PROPERTY (OR PROPERTIES) REFERENCED HEREIN OR AS TO THE ACCURACY OR COMPLETENESS OF THE INFORMATION CONTAINED HEREIN, AND SAME IS SUBMITTED SUBJECT TO ERRORS, OMISSIONS, CHANGE OF PRICE, RENTAL OR OTHER CONDITIONS, WITHDRAWAL, WITHOUT NOTICE, AND TO ANY SPECIAL LISTING CONDITIONS IMPOSED BY THE PROPERTY OWNER(S). ANY PROJECTIONS, OPINIONS OR ESTIMATES ARE SUBJECT TO UNCERTAINTY AND DO NOT SIGNIFY CURRENT OR FUTURE PROPERTY PERFORMANCE.