


Class A Single or Multi-Tenant Office Space

FOR LEASE | 1475 BOETTLER ROAD, GREEN, OHIO 44685



 CUSHMAN & WAKEFIELD

 CRESCO
Real Estate

1475 Boettler Road

- Under new ownership and management
- Available for Lease or Joint Venture
- Lower level offers 81,278 SF serviced by two dock doors and a freight elevator
- City incentives available for job creation
- Institutional quality construction and building mechanical systems
- Unique warehouse component with generator, ideal for light industrial/warehouse or lab users
- ± 700 plus on-site parking spaces



Quick Stats

| | |
|----------------------------------|------------------------|
| Available Space | 20,000 SF - 266,574 SF |
| Year Built (Reno) | 2002 (2016) |
| Land Size | 19 AC |
| Boettler Rd Traffic | 10,569 VPD |
| Distance to I-77 | 1 Mile |
| Distance to Akron-Canton Airport | 5.1 Miles |
| Distance to Akron | 11 Miles |

71,940

Population
(2023 | 5 Mile)

43.0

Median Age
(2023 | 5 Mile)

30,413

Households
(2023 | 5 Mile)

\$114,443

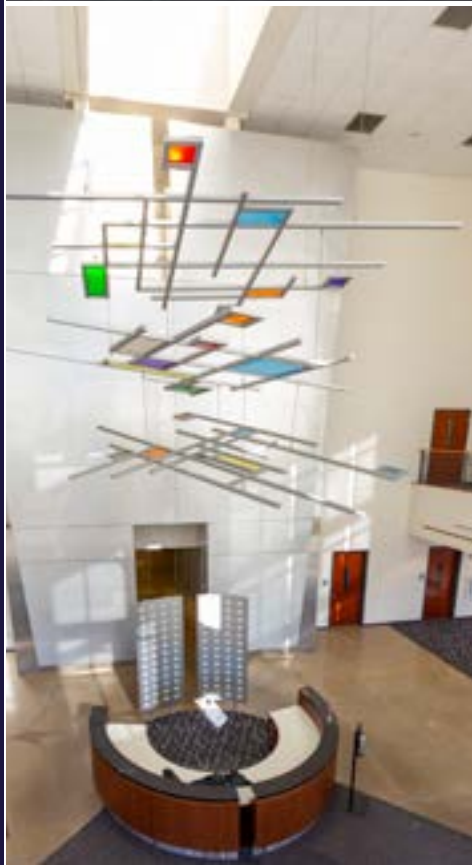
Household Income
(2023 | 5 Mile)

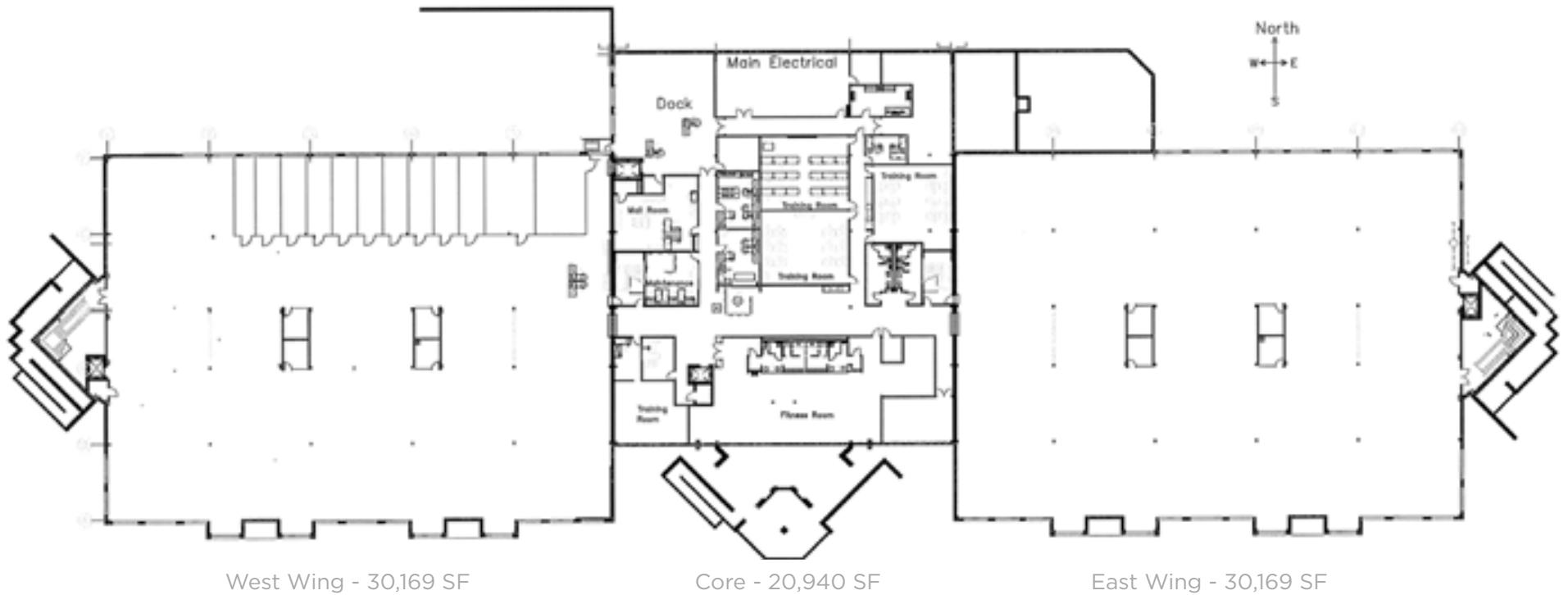
2,639

Total Businesses
(2023 | 5 Mile)

29,802

Total Employees
(2023 | 5 Mile)





Lower Level - 81,278 SF Warehouse
Storage & Loading Dock Access | Max Contiguous 266,574 SF



West Wing - 30,169 SF

Core - 21,540 SF

East Wing - 30,169 SF

First Floor - 81,878 SF Office Space

Divisible to 20,000 SF | Max Contiguous 266,574 SF



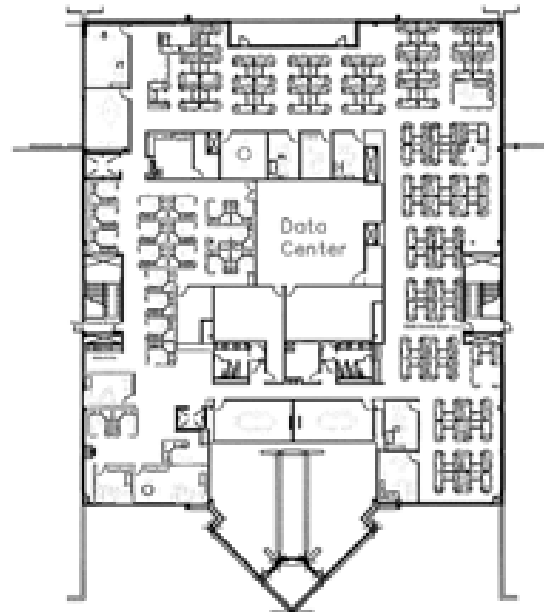
West Wing - 30,169 SF

Core - 21,540 SF

East Wing - 30,169 SF

Second Floor - 81,878 SF Office Space

Divisible to 20,000 SF | Max Contiguous 266,574 SF



Core - 21,540 SF

Third Floor - 21,540 SF Office Space

Divisible to 21,540 SF | Max Contiguous 266,574 SF



Green, Ohio

Green, Ohio, nestled in Summit County, exudes a charming blend of suburban tranquility and vibrant community life. With its lush green landscapes and well-maintained neighborhoods, Green offers residents a serene escape from the hustle and bustle of nearby urban centers. The city boasts a strong sense of community pride, evident in its numerous local events and festivals that bring neighbors together. From its top-rated schools to its abundance of parks and recreational facilities, Green is an ideal place for families to thrive. Its convenient location near major highways provides easy access to shopping, dining, and entertainment options, making it a desirable destination for both residents and visitors alike. Whether exploring the scenic trails of Boettler Park or enjoying a leisurely stroll through its charming downtown area, Green welcomes all with its warm hospitality and inviting atmosphere.

Top Employers

Green Local School District: 632 employees

Summa Health System: 555 employees

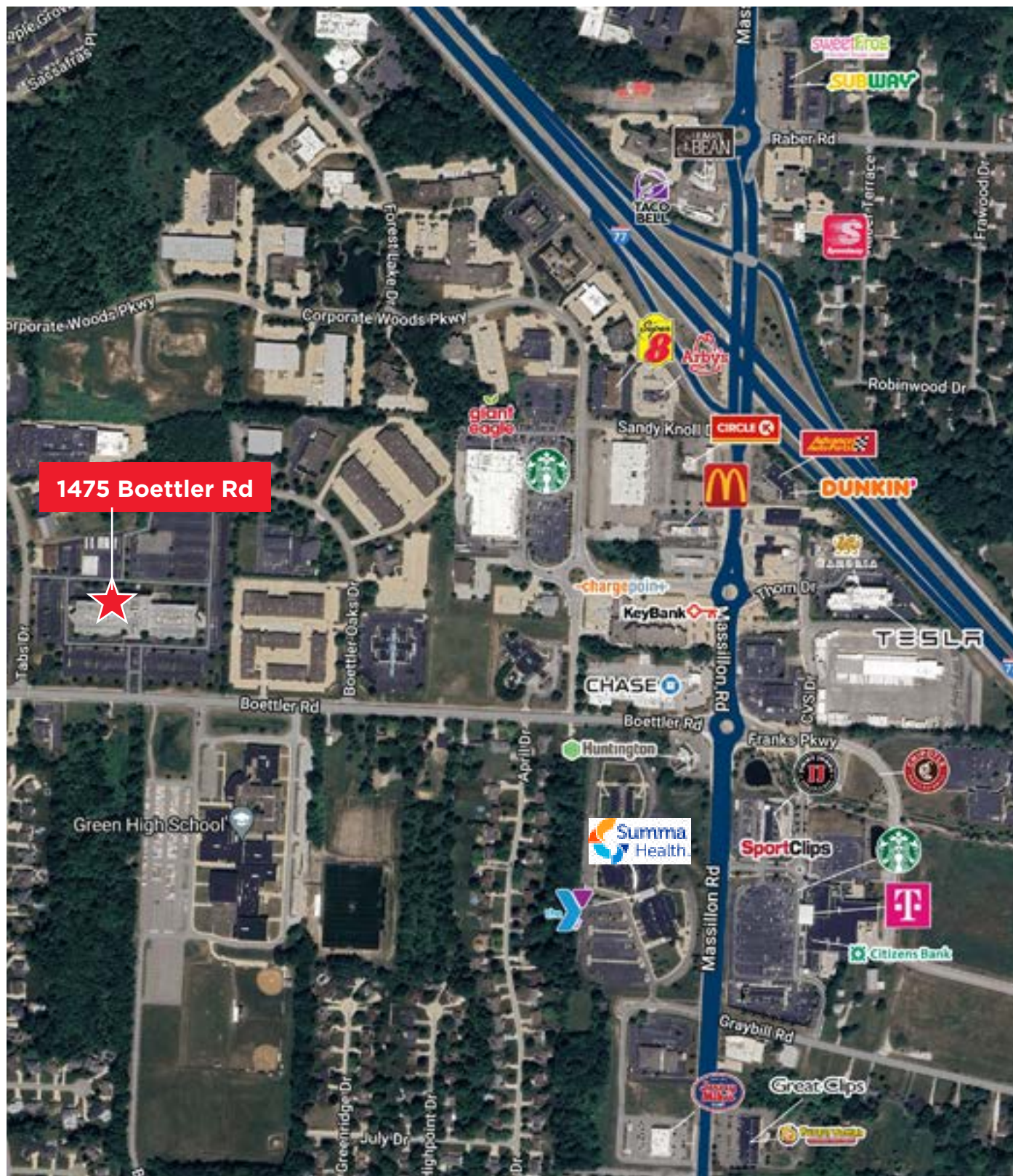
Fannie May Confection: 550 employees

Diebold Nixdorf: 427 employees

Target Corporation: 289 employees

FirstEnergy Corp.: 240 employees

A. Schulman, Inc.: 200 employees



1475 Boettler Rd

1475 BOETTLER ROAD GREEN, OHIO 44685

RICO A. PIETRO, SIOR
Principal
rpietro@crescorealestate.com
+1 216 525 1473

JASON LAVER, SIOR
Senior Vice President
jlaver@crescorealestate.com
+1 216 525 1489

KIRSTEN PARATORE
Senior Associate
kparatore@crescorealestate.com
+1 216 525 1491

ROBBY MARTINELLI
Senior Associate
rmartinelli@crescorealestate.com
+1 216 232 4104

Cushman & Wakefield | CRESCO
6100 Rockside Woods Blvd, Suite 200
Cleveland, Ohio 44131

crescorealestate.com

©2024 Cushman & Wakefield. All rights reserved. The information contained in this communication is strictly confidential. This information has been obtained from sources believed to be reliable but has not been verified. NO WARRANTY OR REPRESENTATION, EXPRESS OR IMPLIED, IS MADE AS TO THE CONDITION OF THE PROPERTY (OR PROPERTIES) REFERENCED HEREIN OR AS TO THE ACCURACY OR COMPLETENESS OF THE INFORMATION CONTAINED HEREIN, AND SAME IS SUBMITTED SUBJECT TO ERRORS, OMISSIONS, CHANGE OF PRICE, RENTAL OR OTHER CONDITIONS, WITHDRAWAL WITHOUT NOTICE, AND TO ANY SPECIAL LISTING CONDITIONS IMPOSED BY THE PROPERTY OWNER(S). ANY PROJECTIONS, OPINIONS OR ESTIMATES ARE SUBJECT TO UNCERTAINTY AND DO NOT SIGNIFY CURRENT OR FUTURE PROPERTY PERFORMANCE.